

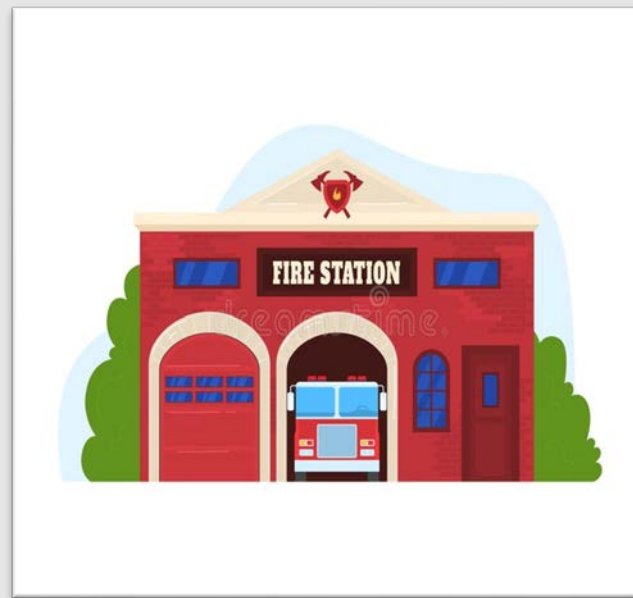
# SAFE PLACE TRAINING

ANCHORAGE CHILDREN'S  
HOME: STREET OUTREACH AND  
RECOVERY



# WHAT IS A SAFE PLACE?

Safe Place is a national youth outreach and prevention program for young people under the age of 18 (up to 21 years of age in some communities) in need of immediate help and safety.



**WHAT ARE SOME  
EXAMPLES OF A  
SAFE PLACE?**

**Police Stations**

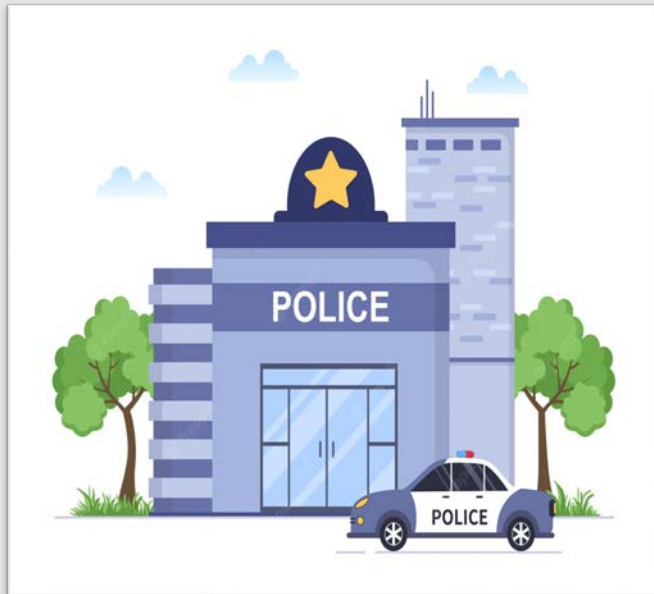
**Fire Stations**

**Libraries**

**Social Service**

**Facilities**

**Various Businesses**



# SAFE PLACE AGENCY RESPONSIBILITIES:

- Host an orientation for employees at each location prior to its opening as a Safe Place site.
- Provide procedure sheets with step-by-step instructions for Safe Place.
- Dispatch Safe Place responders to assist youth at the Safe Place site.
- Provide a Safe Place sign and a “If Closed” sign. Also, provide further instruction and contact information when a Safe Place site is closed.
- Conduct an annual Safe Place site check and submit it to the National Safe Place Network.

A decorative wavy line in dark grey and light grey runs vertically along the left side of the image.

WHO IS YOUR  
SAFE PLACE  
COORDINATOR?

The logo features a light gray, scalloped-edged circular shape centered on a dark gray background. A solid yellow vertical bar is positioned on the far left. The text "SOAR- ANCHORAGE" is on the top line and "CHILDREN'S HOME" is on the bottom line, both in yellow capital letters with a dark gray drop shadow.

**SOAR- ANCHORAGE**  
**CHILDREN'S HOME**




# ANCHORAGE CHILDREN'S HOME

SOAR- Anchorage Children's Home is the local coordinator for all Safe Place sites in Bay, Gulf, Calhoun, Washington, Jackson and Holmes counties.

**S.O.A.R**  
**Street**  
**Outreach**  
**and Recovery**



We are your point of contact with any questions or concerns.



WHAT TO DO  
WHEN A YOUTH  
IS NEEDING  
HELP?

# WHEN A YOUTH COMES TO A SAFE PLACE FOR HELP YOU...

- Introduce yourself and ask the youth if he/she needs help.
- Gather useful information about the situation, without needing to go into detail.
- Encourage them by saying things such as that “You are safe and will be taken care of.”
- Have a designated seating area for the youth that is away from the public but can still be securely monitored.
- Offer the youth a snack or refreshment.
- All professionals encountering the youth must remain calm and professional.

# WHEN A YOUTH COMES TO A SAFE PLACE FOR HELP YOU... CONTINUED

- Call the SOAR Hotline with:
  - Who is calling
  - Location of where you're calling from
  - The youth being cared for at the Safe Place site to include age, race, physical/mental condition, brief explanation of the situation at hand.
- The On-Call Safe Place transporter will give you their name and an estimated time of arrival to get the youth.
- When the Safe Place transporter arrives, verify their identification.



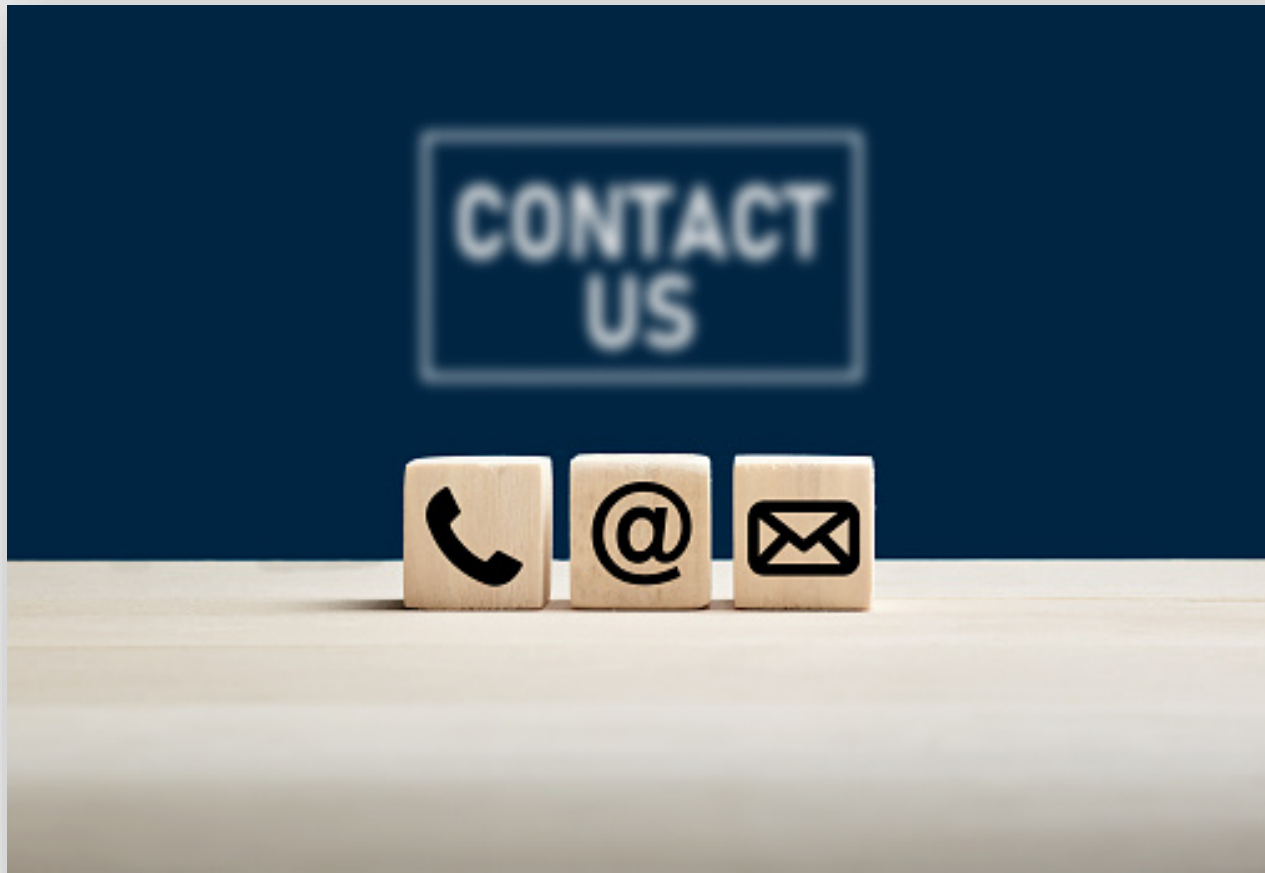
WHAT ARE SAFE  
PLACE SITES  
RESPONSIBILITIES?

- Agree to all site fees as established by the licensed Safe Place agency. (Anchorage pays fees for you)
- Designate Safe Place site responsibilities to a management level employee (21+).
- Train all new staff in the Safe Place site procedures during the onboarding process.
- Agree to conduct an annual Safe Place site check with the licensed Safe Place agency.
- Securely install Safe Place signage in a highly visible area outside the building.

- Display the Safe Place decal and a “If Closed” sign on the entrance of the building.
- Display the Safe Place procedure sheet visibly in a staff area.
- Designate a safe, private area where a youth can wait (employee’s lounge or manager’s office).
- Relay information about the youth to the licensed agency staff.  
(Always maintain confidentiality)
- Be supportive to the youth while waiting for the licensed Safe Place agency to respond.
- Remove and return all Safe Place signage when discontinuing as a Safe Place site.



QUESTIONS?



**Facebook:**  
**SOAR- Anchorage Children's Home**

**Instagram:**  
**s.o.a.r.ach**

## **CONTACT INFORMATION**

**SOAR 24/7 Emergency Hotline**  
**(850) 819- 7120**

**Christina Tolbert– Outreach  
Specialist**  
**[ctolbert@anchoragechildrenshome.org](mailto:ctolbert@anchoragechildrenshome.org)**

**Kylie Dean – Outreach Specialist**  
**[kdean@anchoragechildrenshome.org](mailto:kdean@anchoragechildrenshome.org)**

**Janet Hollomon– Program Manager**  
**[jhollomon@anchoragechildrenshome.org](mailto:jhollomon@anchoragechildrenshome.org)**